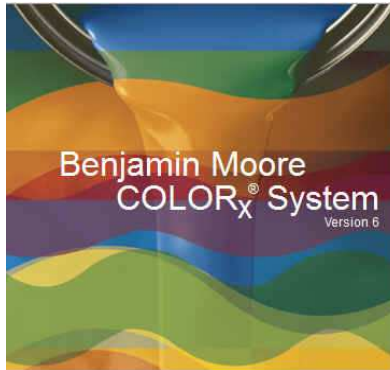


Benjamin Moore & Co. Moore's COLOR_x® System Release Notes & Installation Guide Version 6.29.0000



COLOR_x version 6.29.0000 contains prescriptions and color matching capabilities for new products in the U.S. and Canada. It also contains updated Benjamin Moore prescriptions. For a complete list of updated prescriptions, see page five.

New Products

UltraSpec DTM's HP25; HP28; HP29 (U.S.)

UltraSpec DTM's FP28; FP29 (Canada)

Latex Floor & Patio 121

4X Base prescriptions are now available

New Benjamin Moore Collection U.S.

Fenway collection

Prior Formula Lookup

COLOR_x now has the ability to check for a prior color formula since the last release. See page two for details.

New Competitive Color Collections

The following color collections have been added to this release of COLOR_x.

1- Behr Interior & Exterior Color Collection

Help

While in the COLOR_x application, you can view the Operator's Manual and the Quick Start Guide by clicking on Help, then choose COLOR_x Help for the manual or COLOR_x Quick Start.

Competitive Color Prescriptions

We have amassed an extensive collection of colors from our competitor's color merchandise. This information is available in our Color Search option in COLOR_x. To see if a color exists, simply follow the same procedure you would for a Benjamin Moore color. Enter a color number or name, along with a product, and either select an individual company or check the "Search All" box above the Select Company drop down list.

Unlike a Benjamin Moore color which displays a prescription created and tested by our Color Prescribing Lab, we store just the measurement of the competitive color. That measurement is run in our color matching application to generate a color prescription the same as if you measured a custom color with a spectrophotometer and calculated a match.

Therefore, when a customer requests a match to a competitive color, a retailer should follow this procedure. First, look up the color in COLOR_x and determine if we have it in our system. If it is, a prescription will be calculated and displayed. Click on the button “Closest BM Color”, this will list the five closest Benjamin Moore colors. Suggest to the customer that they look at our closest colors and see if that meets their color requirements. This has two benefits, if the color is acceptable, then you have a tested Benjamin Moore prescription to make the color and you have changed a competitive color specification to a Benjamin Moore color specification.

Second, if you or the customer has a sample of the competitive color merchandise then match the color merchandise just as you would match a custom color. Since the customer will be judging the color to the merchandise sample that should be your target. Depending on the age and condition of the merchandise, it may not represent what we have stored in COLOR_x.

Finally, if the customer does not like our closest color and no sample of the color is available then use the calculated match in COLOR_x.

If you have any questions, please contact your Color Technology Rep. or call 800-809-9213.

Prior Color Formulas

To optimize color formulas, many Benjamin Moore color prescriptions are modified. This is done to achieve the best possible match for a Benjamin Moore color.

When a Benjamin Moore color formula has been changed from the previous version of COLOR_x, the system will display the message “[Click for Prior Formula](#)” next to the color formula box as shown below in figure 1-28.

Benjamin Moore COLOR_x System

Benjamin Moore Paints Your Benjamin Moore Retailer

File Edit View Format Formula Maintenance Help Colors mixed on: 07/16/2014 199 (Barley)

Quick Color Search

Enter Color Number or Name: 199

Select Product Code: 528

Select Company: Benjamin Moore & Co. Search All

Search Options: Color Name starts with...

Search

Customer: General Account
Color: 199 (Barley)
Company: Benjamin Moore & Co.
Strip #: 037

Colorant 528 - 1X (Gallon)

Colorant	Quantity	Cost
S1	0x	2.0000
W1	1x	22.0000
Y2	2x	14.0000
R3	0x	5.5000

Also Known As

[Click for Prior Formula](#)

Cost: Revised: 4/28/2014
Num of Cans: 1
Labels to Print: 1

Quick Color Search

Search Colors within a Company

Search Customer Files

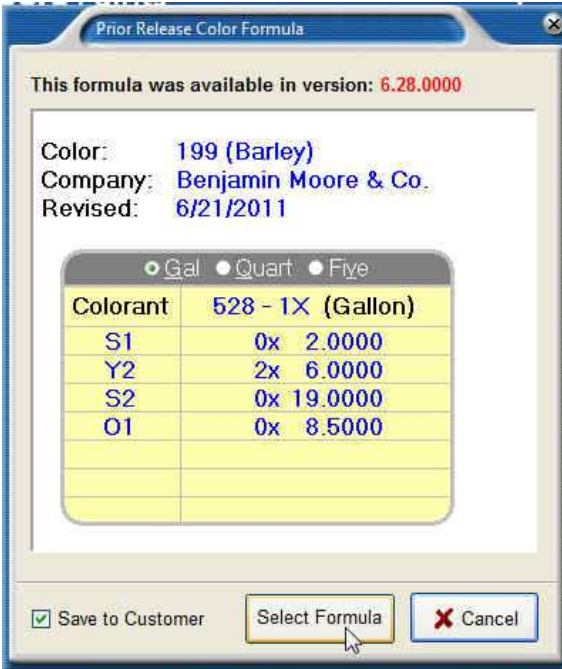
Color Matching

Competitive brands are referenced for color comparison only. Benjamin Moore & Co. is not affiliated with these brands.

Save to Customer Reformulate Modify Formula Comments Dispense

Figure 1-28

To view the prior formula, click on the [Click for Prior Formula](#).
The previous formula will appear as in the screen below.



Prior Release Color Formula

This formula was available in version: 6.28.0000

Color: 199 (Barley)
Company: Benjamin Moore & Co.
Revised: 6/21/2011

☒ Gal ☐ Quart ☐ Five

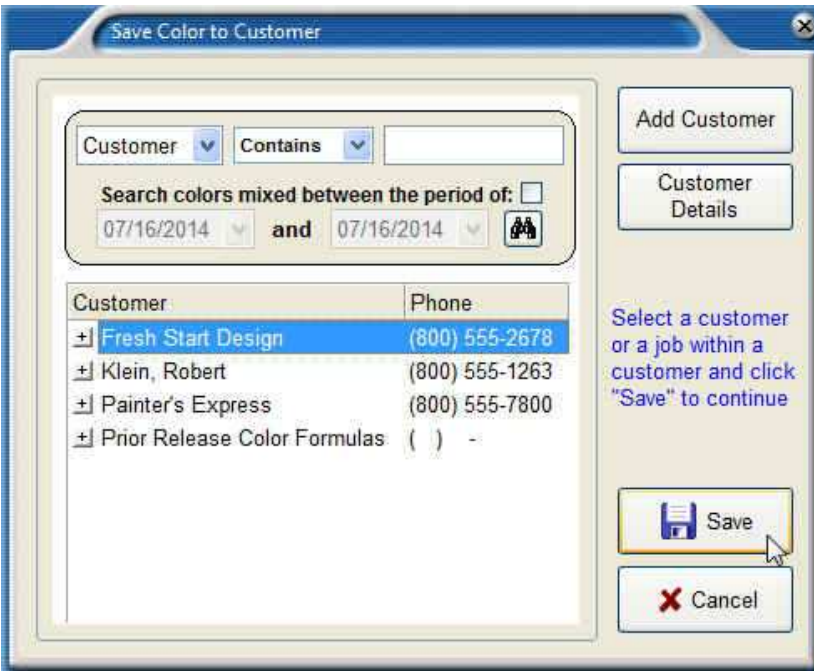
Colorant	528 - 1X (Gallon)	
S1	0x	2.0000
Y2	2x	6.0000
S2	0x	19.0000
O1	0x	8.5000

☒ Save to Customer Select Formula

Figure 1-29

If you do not wish to use this prior formula, simply click on the Cancel button.

If you wish to use this prior formula, click on the Select button. The system will allow you to save this formula to a customer as shown below. Simply choose a customer and click on the Save button.



Save Color to Customer

Customer Contains

Search colors mixed between the period of: ☐
07/16/2014 and 07/16/2014

Customer	Phone
+ Fresh Start Design	(800) 555-2678
+ Klein, Robert	(800) 555-1263
+ Painter's Express	(800) 555-7800
+ Prior Release Color Formulas	() -

Add Customer
Customer Details

Select a customer or a job within a customer and click "Save" to continue

Figure 1-30

If you do not want to save the prior formula to a specific customer, then click the cancel button and the formula will be displayed on the screen where you can print or dispense the formula. This formula is also stored in Prior Release Color Formulas as shown below.

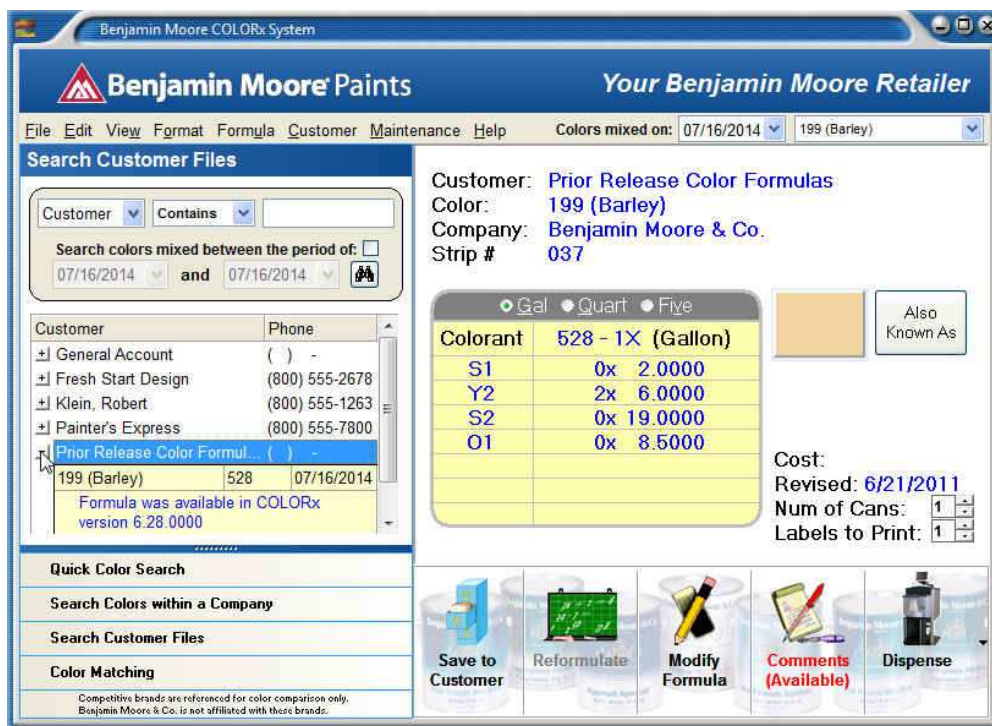


Figure 1-31

Information is added to this formula as comments. Note the highlighted Comments button.

By clicking on the Comments Available button, it will display the version of COLORx where the formula was available and the original revision date as shown below in figure 1-32.

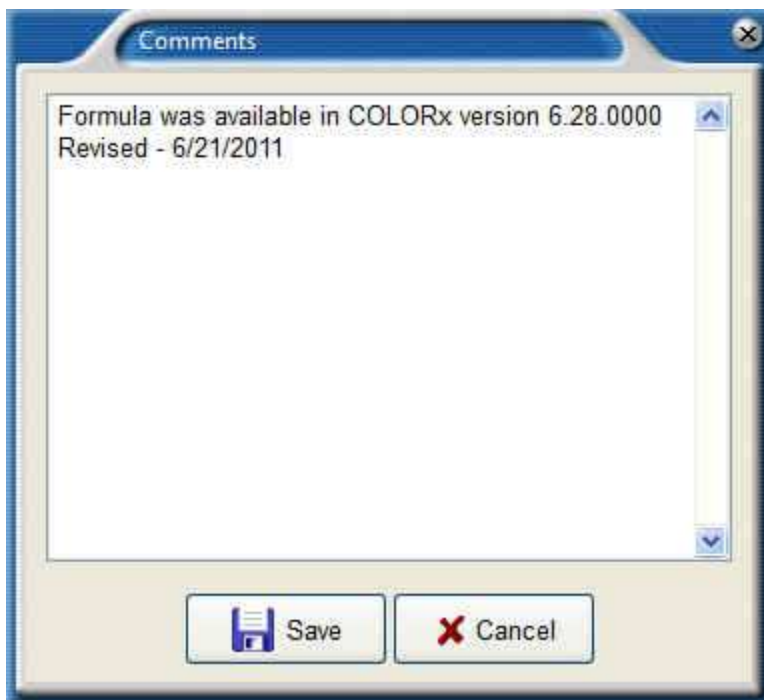


Figure 1-32

Prescription Changes since COLORx Version 6.28.2000 (United States)

The prescriptions for product 7923X have been modified for improved matches. Please refer to the revision date when calling up prescriptions for these colors. A revision date after 5/30/2014 indicates a change in the prescription since COLORx version 6.28.2000.

The following colors had their prescriptions changed in several products: 202, 1066, 1315, 2134-30, 2137-20, AF-575, HC-10, HC-169, OC-96. Please refer to the revision date when calling up prescriptions for these colors. A revision date after 5/30/2014 indicates a change in the prescription since COLORx version 6.28.2000.

Deep base primers have been added to prescriptions in products 792, 793, N794, 147 and 148.

A new prescription was added for Sun Yellow in product W309.

New prescriptions were added for White Coffee in products 547, 550, & 551.

The following prescription has been modified for product 13: 2021-30.

The following prescription has been modified for product 522: 399.

The following prescription has been modified for product 524: 2139-50.

The following prescriptions have been modified for product 532: 2021-30, 2112-70, AF-380.

The following prescriptions have been modified for product 549: 2021-30, 2111-60, 2162-50, PM-2.

The following prescription has been modified for product 634: 2138-40.

The following prescriptions have been modified for product 792: 267, 2079-10, 2084-20, 2096-20.

The following prescriptions have been modified for product N122: PM-11, PM-12.

The following prescriptions have been modified for product N401: 869, 2124-10, OC-57.

The following prescriptions have been modified for product N448: 360, 1201, AF-145, AF-340, AF-345, AF-360, AF-365, AF-395, AF-400, AF-410, AF-415, AF-500, AF-600, AF-675.

The following prescriptions have been modified for product N536: 2111-70, OC-22.

The following prescriptions have been modified for product N794: 2132-10, PM-9.

Prescription Changes since COLORx Version 6.28.2000 (Canada)

The prescriptions for product K7923X have been modified for improved matches. Please refer to the revision date when calling up prescriptions for these colors. A revision date after 5/30/2014 indicates a change in the prescription since COLORx version 6.28.2000.

The following colors had their prescriptions changed in several products: 2134-30, 2137-20, AF-575, CC-140, HC-10, HC-169, OC- 96, and OR-6. Please refer to the revision date when calling up prescriptions for these colors. A revision date after 5/30/2014 indicates a change in the prescription since COLORx version 6.28.2000.

Deep base primers have been added to prescriptions in products K792, K793 and F794.

A new prescription was added for Sun Yellow in product L309.

New prescriptions were added for White Coffee in products K547, K550, & K551.

The following prescription has been modified for product 13: 2021-30.

The following prescriptions have been modified for product F122: PM-11, and PM-12.

The following prescriptions have been modified for product F373: CC-32, and R-9902.

The following prescriptions have been modified for product F794: 2132-10, and PM-9.

The following prescriptions have been modified for product K401: 2124-10, CC-30, OC-57, OR-404, and OR-429.

The following prescriptions have been modified for product K448: AF-145, AF-340, AF-345, AF-360, AF-365, AF- 395, AF- 400, AF- 410, AF-415, AF-500, AF-600, and AF-675.

The following prescription has been modified for product K524: 2139-50.

The following prescriptions have been modified for product K532: 2021-30, 2112-70, AF-380.

The following prescriptions have been modified for product K536: 2111-70, OC-22.

The following prescriptions have been modified for product K549: 2021-30, 2111-60, 2162-50, OR-85, OR-443, OR-488, OR-489, and PM-2.

The following prescriptions have been modified for product K552: 2135-30, CC-20, HC-37, and PM-3.

The following prescription has been modified for product K634: 2138-40.

The following prescriptions have been modified for product K792: 2079-10, 2084-20, 2096-20.

Moore's COLOR_x® System Installation Guide

The Benjamin Moore COLOR_x Prescription Book and Color Matching System programs are incorporated into a single software package. It is available on the Benjamin Moore Retailer Portal, Mybenjaminmoore.com and runs under the Windows® XP, Windows® Vista, Windows® 7, and Windows® 8 operating systems.

Minimum System Requirements

- Intel Pentium® processor 500 MHz or higher.
- 1 GB of RAM
- 750 MB of free hard disk space.
- CD or DVD Drive
- Video card capable of supporting 16M colors
- Printer
- Serial or USB port for spectrophotometer
- Windows® XP, Windows® Vista, Windows® 7 or Windows® 8

Installation

If you are downloading COLOR_x from the Benjamin Moore Retailer Portal, mybenjaminmoore.com, read the "COLOR_x Download Instructions." This will instruct you how to download and install COLOR_x on your computer.

To install COLOR_x from a CD, you must have the Windows desktop displayed. If there are any other applications running, they should be closed before attempting to install the program. If your system has any automatic virus detection software enabled, it should be disabled before installing.

Insert the CD labeled "COLOR_x System" into the CD drive.

The installation procedure will automatically start and bring you to the **Welcome Screen**.

If the installation does not automatically start, click on the "Start" button, usually found at the lower left corner of the screen. The primary menu will pop up. Click on "Run..." and the "Run" dialog box will display. Type "**D:\SETUP**" (where "**D:**" is the designated drive letter for the CD) on the "Open" line and click on "OK".

The Setup Wizard will guide you through the installation.

License Agreement

As you start the installation, the License Agreement screen appears. Be sure to read this license agreement. If you disagree with the terms of the agreement, then click on the Cancel button to exit the installation. If you agree with the terms, then check the appropriate box to continue the installation. The installation will prompt you to select the software region, United States or Canada. The default is United States.

After the successful installation of the software you may be prompted to reboot your system.

Note: If you have a previous version of COLOR_x® 6, this installation will not write over any stored samples or stored customers. They can be still be accessed.